

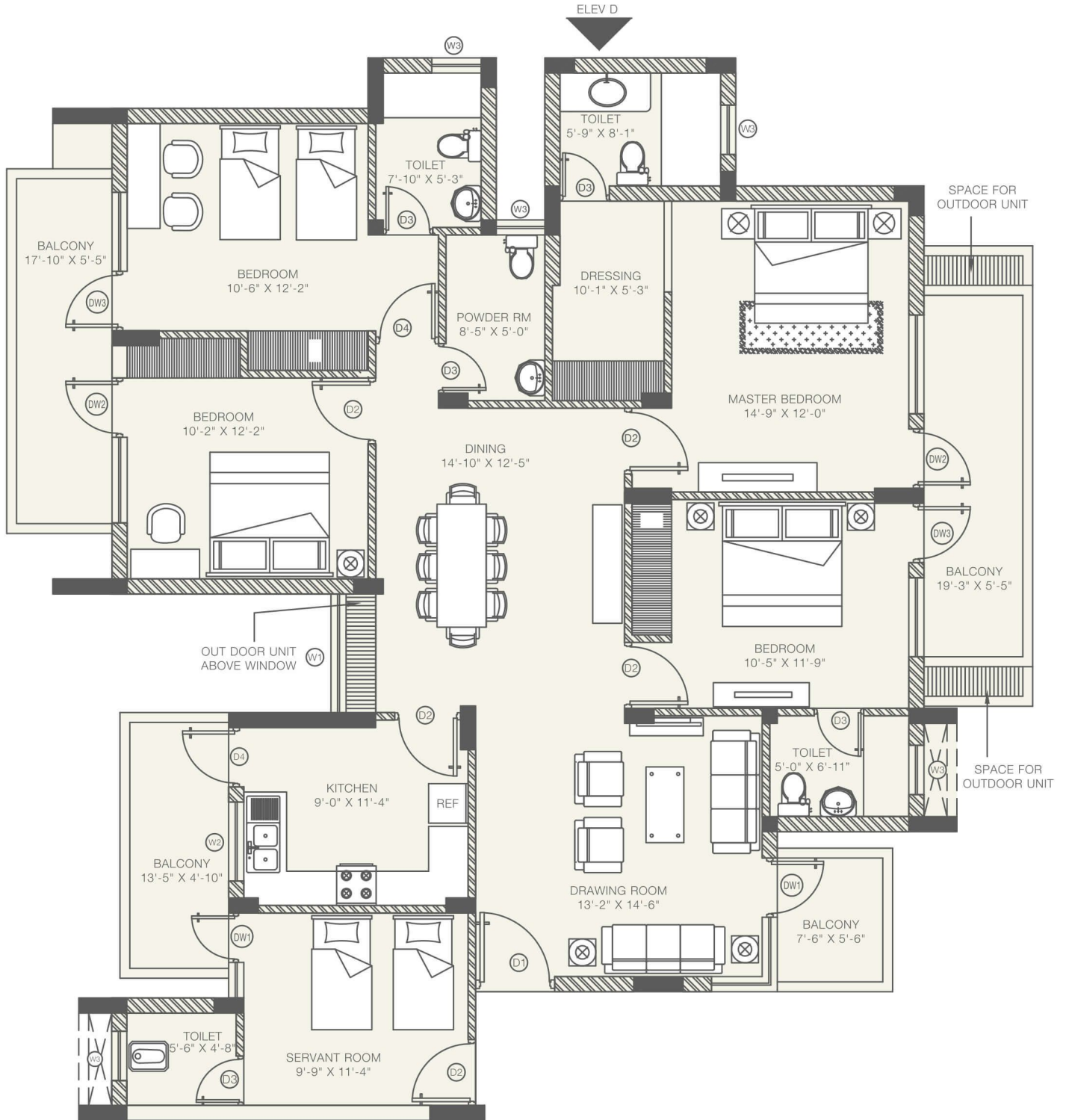
# Typical Floor Plan

4 BHK + S Unit

Super area : 237.82 sq.mt approx (2560 sq.ft.)

Built up area : 2017 sq.ft.

Carpet area : 1513 sq.ft.



# Typical Floor Plan

3 BHK + S Unit

Super area : 196.95 sq.mt approx (2120 sq.ft.)

Built up area : 1616 sq.ft.

Carpet area : 1240 sq.ft.

